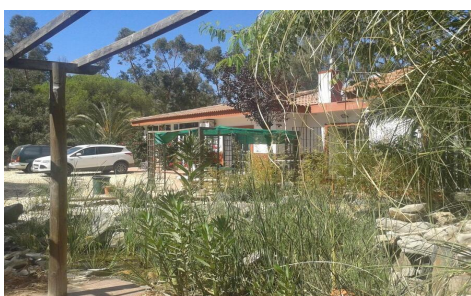




Finca in Gibraleon

€295,000



7



3



200m²



5,800m²



Villa Lola is a substantial country house located in a quiet and private area of rustic natural beauty in the Gibraleon countryside. It is only five minutes drive to the village and the same to the Sevilla - Portugal highway. Access to the finca is via a track through an olive grove of less than one kilometre. The property is a few hundred metres off the road along a good track that do (See all details on our web page...)